

AbbeySeals

THE SEAL SPECIALISTS



MADE IN IRELAND




STANDARD SEAL PROFILES

ROD WIPERS | ROD SEALS | ROD/PISTON BEARING RINGS | PISTON SEALS | O RINGS/BACK UP RINGS/GASKETS | ROTARY SEALS

Ireland's Leading Manufacturer and Distributor of Seals and Gaskets

abbeyseals.ie

A man with a beard and glasses is shown in profile, looking intently at a CNC machine. The machine has a control panel with a grid of buttons and a red emergency stop button. The background is a blurred industrial setting with various mechanical parts and tools.

Abbey Seals Xpress, our in-house manufacturing division offers a service that is unrivalled in Ireland. We are the only company in the country who produces high quality seals and gaskets with a same day turnaround.

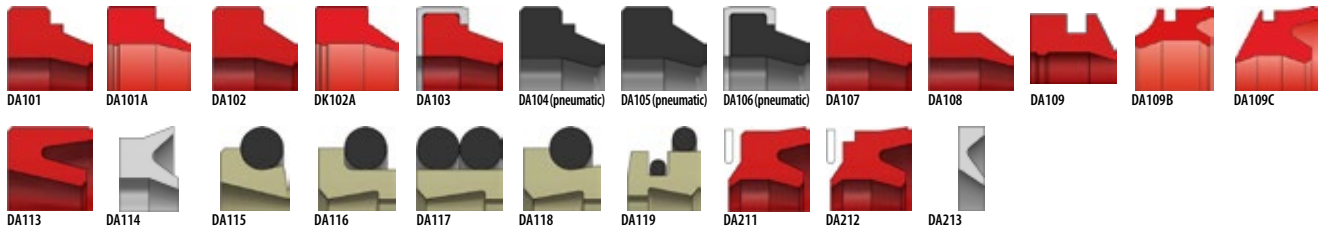
Using state of the art machinery and software we have over 180 standard profiles, plus the ability to create new profiles for prototypes. Both of our CNC lathes have barfeeders which further enhances our productivity and efficiency especially on bulk orders. We can machine parts from 5mm OD up to 600mm OD and by offering a wide array of materials we can satisfy an enormous combination of sealing applications all available for shipping nationwide & internationally.

We have invested substantially in stocking high quality materials such as FDA compliant polyurethane, NBR, FDA approved Viton®, FDA approved Silicone, FDA approved EPDM, Bronze filled PTFE, Virgin PTFE, Acetal and many more.

Whether you need a custom sealing product or one of the 180 pre-set profiles, we have what you need.

Call our offices in Dublin or Cork to talk to our team.

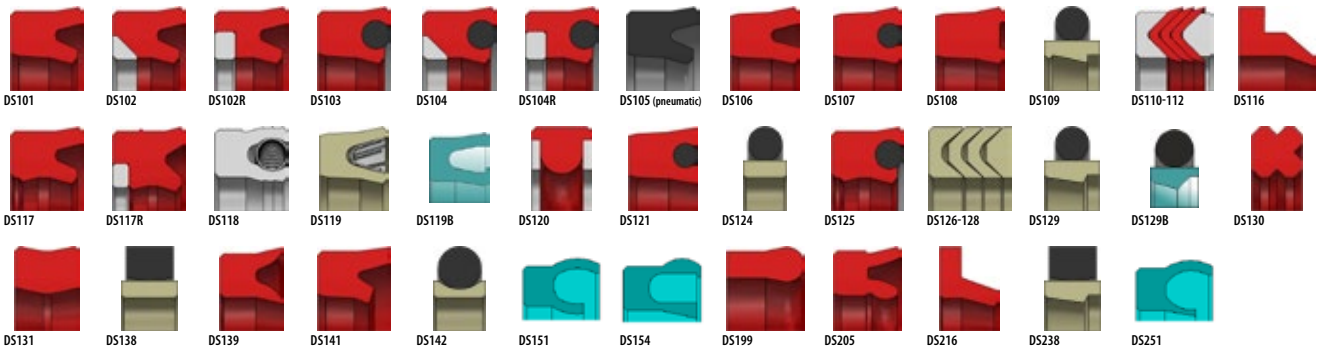
ROD WIPERS



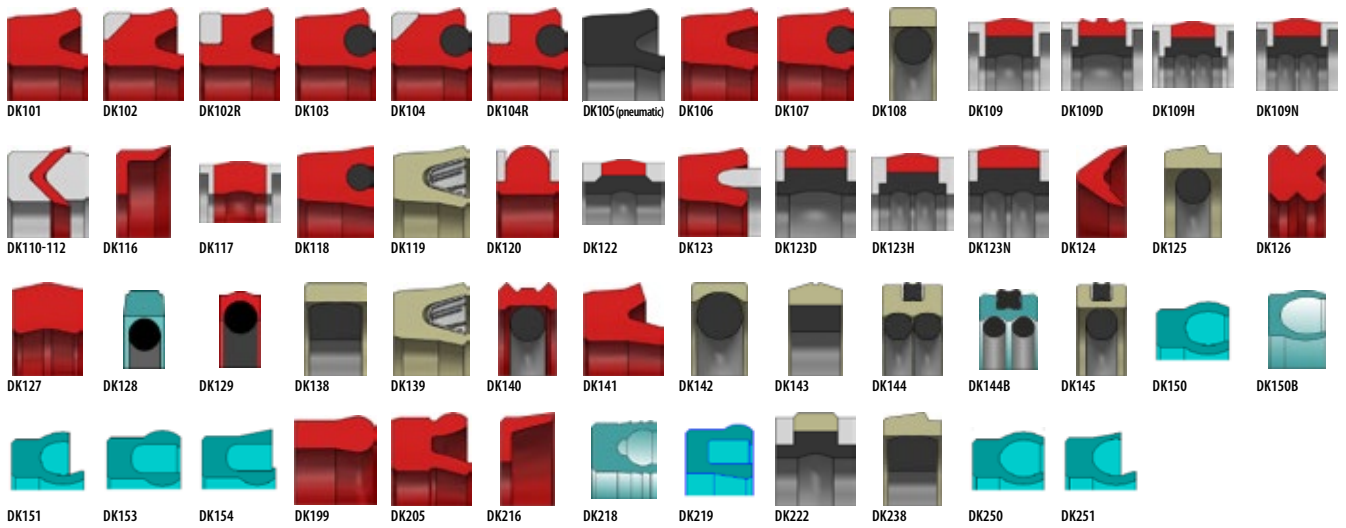
ROD/PISTON BEARING RINGS



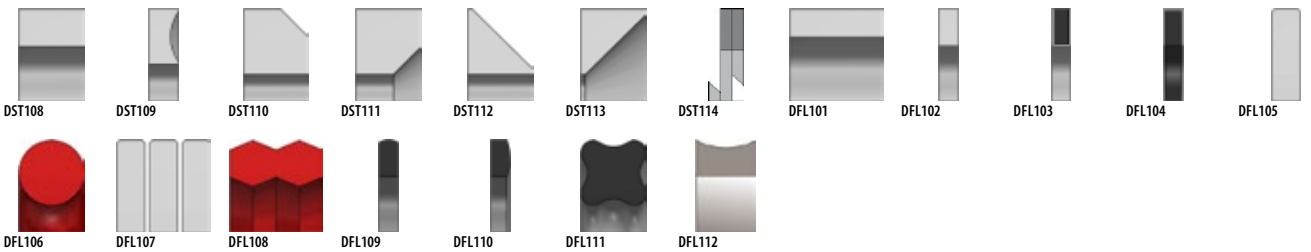
ROD SEALS



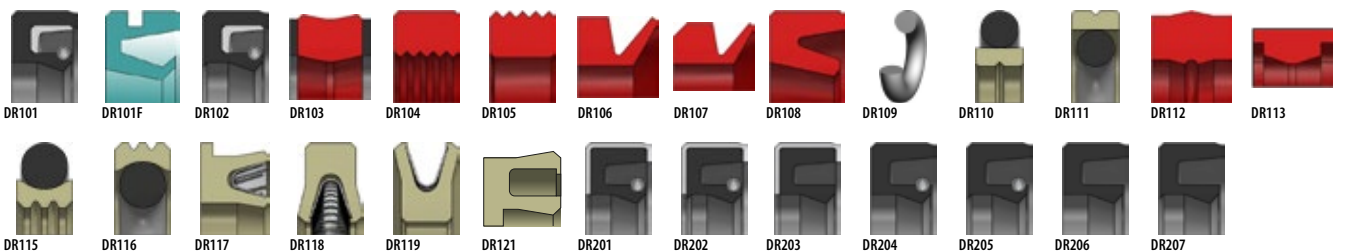
PISTON SEALS



**O-RINGS/
BACK UP
RINGS/
GASKETS**

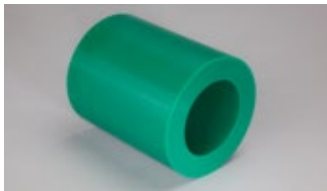


ROTARY SEALS



MATERIAL DATA TABLE

	Standard	Unit	HPU/U2	HPU 55D	C-HPU 57	C-HPU 72	LT-PU	LT-PU Plus	SL-PU	NBR	NBR White	NBR 73 Soft	NBR FDA Blue	H-NBR	H-NBR 90
Colour			Red	Yellow	Yellow	Black	Dark Blue	Blue	Grey	Black	White	Black	Blue	Green	Black
Hardness	ISO 868	Shore A	95 ± 2				94 ± 2	94 ± 2	96 ± 2	85 ± 5	85 ± 5	75 ± 5	80 ± 5	85 ± 5	90 ± 5
Hardness	ISO 868	Shore D	48 ± 3	55 ± 3	57 ± 3	70 ± 3	47 ± 3	49 ± 3	48 ± 3						
Modulus 100%	DIN 53 504	MPa	≥15	≥20	≥20	≥30	≥12	≥12	≥12	≥11	≥8	≥7	≥5	≥10	≥6
Modulus 300%			≥28	≥35	≥33		≥22	≥22	≥22						
Tensile Strength	DIN 53 504	Mpa	≥50	≥45	≥45	≥50	≥50	≥45	≥45	≥17	≥15	≥16	≥8	≥20	≥9
Elongation at Break	DIN 53 504	%	≥350	≥340	≥350	≥150	≥550	≥450	≥350	≥150	≥200	≥225	≥140	≥190	≥220
Tear Strength	DIN ISO 34-1	kN/m	≥110	≥110	≥110	≥110	≥80	≥80	≥80	≥18	≥18	≥5		≥15	≥20
Specific Gravity	ISO 1183	kg/m3	1200	1210	1160	1210	1170	1130	1190	1280	1440	1230	1230	1320	≥1450
Abrasion	DIN 53 516	mm3	17	25	25		17	20	15	100	140	132	248	135	130
Compression Set *	ISO 815	%	≤27	≤30	≤30		≤27	≤27	≤30	≤5	≤7	≤5	≤13	≤12	≤26
Compression Set **	ISO 815	%	≤33	≤35	≤35		≤33	≤30	≤35	≤6	≤9	≤8		≤14	≤32
Min Service Temp		°C	-20	-20	-30	-20	-50	-55	-20	-30	-30	-30	-30	-20	-20
Max Service Temp		°C	115	115	110	110	110	110	110	110	110	90	100	150	150
Pressure Resistance: Dynamic		Bar	400	550	600	600	500	350	350	250	200	150	150	250	250
Pressure Resistance: Static		Bar	750	750	1000	1000	750			500	400	250	300	500	500



POLYURETHANE/PU

- PU
- HPU
- HPU 55 D
- C-HPU
- C-HPU 57 D
- C-HPU 72 D
- HT-PU
- LT-PU
- LT-PU +
- SL-PU

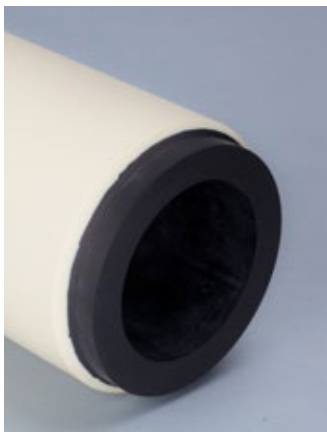


NITRILE BUTADIENE RUBBER

- NBR (black)
- NBR FDA BLUE & EN1935/2004
- T-NBR
- H-NBR
- H-NBR 90
- H-NBR ED
- NBR (white)
- NBR 73

MATERIAL DATA TABLE

	Standard	Unit	H-NBR ED	T-NBR	EPDM Peroxide	EPDM FDA White	EPDM FDA	EPDM KTW	EPDM FDA Blue	FPM FDA	FPM/Viton®	FPM/Viton® Black	FPM ED	FPM FDA Blue	MVQ
Colour			Black	Black	Black	White	Black	Black	Blue	Brown	Brown	Black	Black	Blue	Blue
Hardness	ISO 868	Shore A	85 ± 5	80 ± 5	85 ± 5	82 ± 5	85 ± 5	81 ± 5	81 ± 5	80 ± 5	82 ± 5	85 ± 5	85 ± 5	80 ± 5	85 ± 5
Hardness	ISO 868	Shore D													
Modulus 100%	DIN 53 504	MPa	≥7	≥9		≥4		≥5	≥5	≥6	≥6	≥7	≥6	≥4	≥5
Modulus 300%															
Tensile Strength	DIN 53 504	Mpa	≥17	≥14	≥12	≥7	≥10	≥12	≥9	≥8	≥9	≥9	≥10	≥7	≥7
Elongation at Break	DIN 53 504	%	≥190	≥140	≥80	≥160	≥85	150	≥140	≥150	≥200	≥140	≥200	≥180	100
Tear Strength	DIN ISO 34-1	kN/m	≥21	≥15	≥10	≥	≥4	≥8			≥20	≥7	≥20	≥41	≥16,4
Specific Gravity	ISO 1183	kg/m3	1290	1270	1220	1220	1180	1170	1120	2400	2530	1870	1860	2530	1470
Abrasion	DIN 53 516	mm3	184		140	291	160		177	220	175		175	252	
Compression Set *	ISO 815	%	≤17	≤6	≤7	≤25	≤10	≤15	≤14	≤7	≤13	≤13	≤30	≤6	≤10
Compression Set **	ISO 815	%	≤21	≤9	≤7	≤30	≤10		≤15	≤9	≤15	≤15	≤35	≤8	≤30
Min Service Temp		°C	-15	-50	-45	-45	-45	-40	-30	-20	-20	-20	-20	-17	-60
Max Service Temp		°C	150	110	130	130	130	130	130	220	220	210	220	200	200
Pressure Resistance: Dynamic		Bar	250	150	150	150	150	150	150	150	150	150	150	150	150
Pressure Resistance: Static		Bar	500	400	300		300	300	300	300	300	300	300	300	200



ETHYLENE PROPYLENE DIENE RUBBER

- EPDM (Black)
- EPDM FDA (White)
- EPDM KTW
- EPDM FDA Blue & EN1935/2004

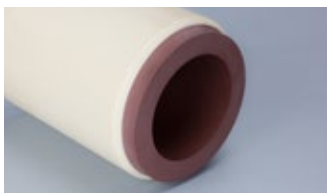


PTFE

- PTFE (virgin)
- PTFE Carbon
- PTFE Graphite
- PTFE Bronze
- PTFE PEEK
- PTFE D05
- PTFE 25 % Glass

MATERIAL DATA TABLE

	Standard	Unit	MVQ FDA	MVQ FDA White	POM	POM Black	PA	UHMW-PE	PTFE Virgin	PTFE Bronze	PTFE D05	PTFE 25% Glass	PTFE Graphite	PTFE Carbon	PTFE PEEK
Colour			Translucent	White	White	Black	Natural	Natural	White	Brown	Turquoise	Grey	Dark Grey	Black	Cream
Hardness	ISO 868	Shore A	85 ± 5	85 ± 5					55 ± 3	60 ± 3	57 ± 3	60 ± 3	60 ± 3	67 ± 3	60 ± 3
Hardness	ISO 868	Shore D			81 ± 3	81 ± 3	79 ± 3	61 ± 3							
Modulus 100%	DIN 53 504	MPa	≥4	≥5											
Modulus 300%															
Tensile Strength	DIN 53 504	Mpa	≥8	≥7	60	60	80	≥40	≥27	≥22	≥31	≥17	≥14	≥12	≥21
Elongation at Break	DIN 53 504	%	≥250	≥100	30	30	40	≥50	≥250	≥200	≥270	≥170	≥110	≥45	≥220
Tear Strength	DIN ISO 34-1	kN/m	≥8	≥16,4											
Specific Gravity	ISO 1183	kg/m3	1225	1470	1410	1410	1130								2050
Abrasion	DIN 53 516	mm3													
Compression Set *	ISO 815	%	≤14	≤10											
Compression Set **	ISO 815	%	≤22	≤30											
Min Service Temp		°C	-60	-60	-45	-45	-40	-200	-200	-200	-200	-200	-200	-200	-200
Max Service Temp		°C	200	200	100	100	110	80	260	260	260	260	260	260	260
Pressure Resistance: Dynamic		Bar	150	150	500	500	500	350	250	450	300		350	650	650
Pressure Resistance: Static		Bar	200	200	750	750	750	400	250	450	300		350	650	650



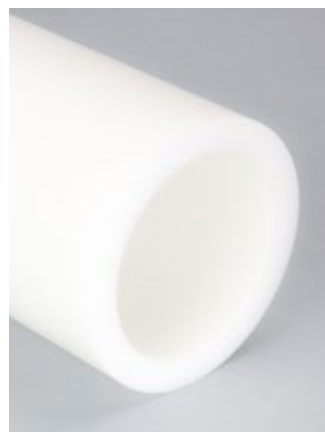
VITON® / FPM

- FPM (brown)
- FPM FDA Brown
- FPM ED
- FPM Black
- FPM FDA Blue & EN1935/2004



SILICON®

- MVQ FDA
- MVQ Natural FDA
- MVQ White FDA



ENGINEERING PLASTICS

- POM
- PA
- UHMW-PE
- POM Black



MADE IN IRELAND

FROM IRELAND TO THE WORLD



 DUBLIN

 CORK

DUBLIN

John F. Kennedy Rd
John F. Kennedy Ind Est
Dublin D12 PD36, Ireland

T: +353 (0)1 427 7900
E: dublin@abbeyseals.ie
W: abbeyseals.ie

CORK

31B Euro Business Park
Little Island
Cork T45 X310, Ireland

T: +353 (0)21 500 3555
F: +353 (0)21 500 3554
E: cork@abbeyseals.ie